

# Fleet Updates

Erik Hilaski

6B Users Conference | San Antonio, TX | June 19-22, 2017

**© 2017, General Electric Company.**

GE Proprietary Information - The information contained in this document is General Electric Company (GE) proprietary information. It is the property of GE and shall not be used, disclosed to others or reproduced without the express written consent of GE, including, but without limitation, in the creation, manufacture, development, or derivation of any repairs, modifications, spare parts, or configuration changes or to obtain government or regulatory approval to do so, if consent is given for reproduction in whole or in part, this notice and the notice set forth on each page of this document shall appear in any such reproduction in whole or in part. The information contained in this document may also be controlled by the US export control laws. Unauthorized export or re-export is prohibited. This presentation and the information herein are provided for information purposes only and are subject to change without notice. NO REPRESENTATION OR WARRANTY IS MADE OR IMPLIED AS TO ITS COMPLETENESS, ACCURACY, OR FITNESS FOR ANY PARTICULAR PURPOSE.



# 6B New TILS, Information Bulletins

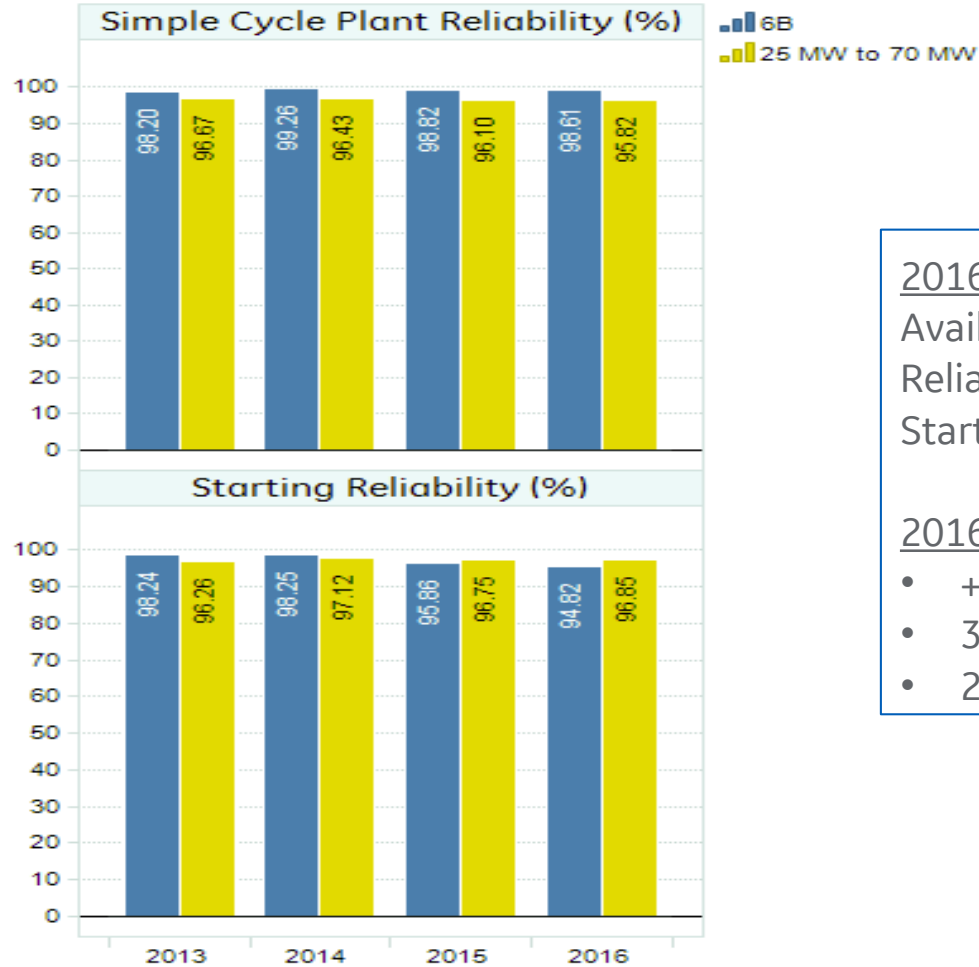
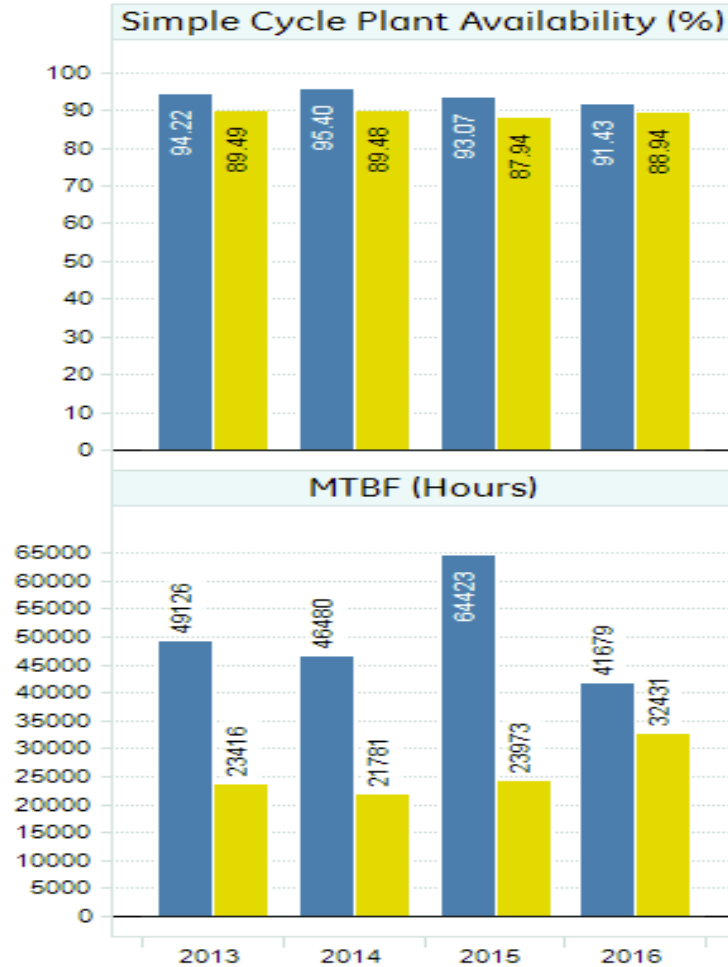
Type	Doc #	Title	Date Issued	Compliance Category	Timing
PSIB	20161117A	Lifting and Rigging devices	Nov 2016	n/a	n/a
PSIB	20170428A	6B-9E Compressor Inspections	Apr 2017	n/a	n/a



# 6B Simple Cycle Plant Scope (GT+GEN+SC BOP) Availability & Reliability

ORAP 4Q 2016 Report - 60 GE 6B units & 267 Industry units (including GE units)

(Rolling 12 Month Statistics)



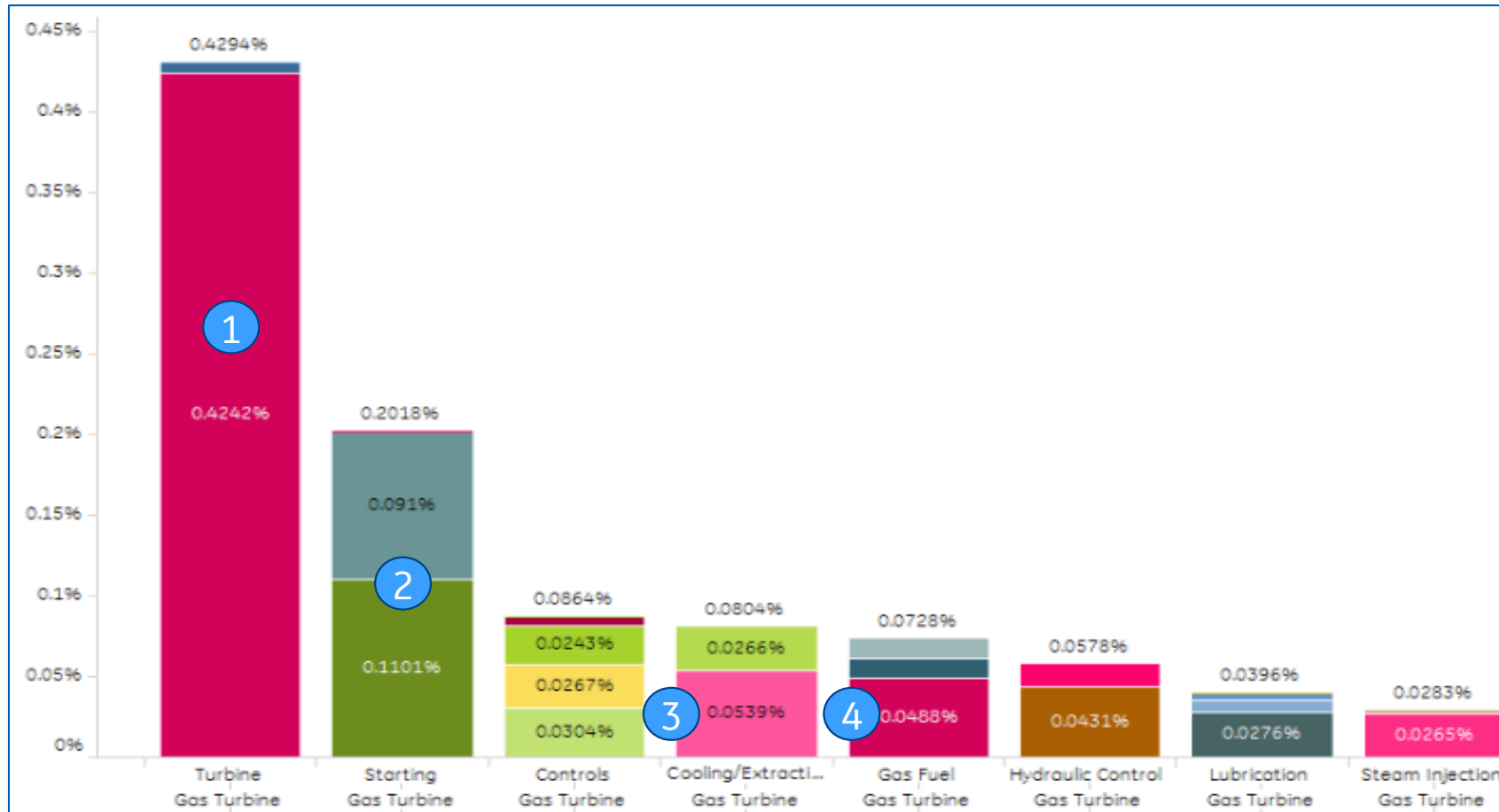
2016 - GE 6B Fleet RAM Highlight  
 Availability : 91.43%  
 Reliability : 98.61%  
 Starting Reliability : 94.82%

2016 - 6B Performance vs. Industry

- +9 days more available for service
- 3% pt. higher in Reliability
- 28% higher in MTBF

# 6B Fleet Reliability Drivers – Gas Turbine

2016 Events as reported via ORAP



## 2016 Top Reliability Drivers

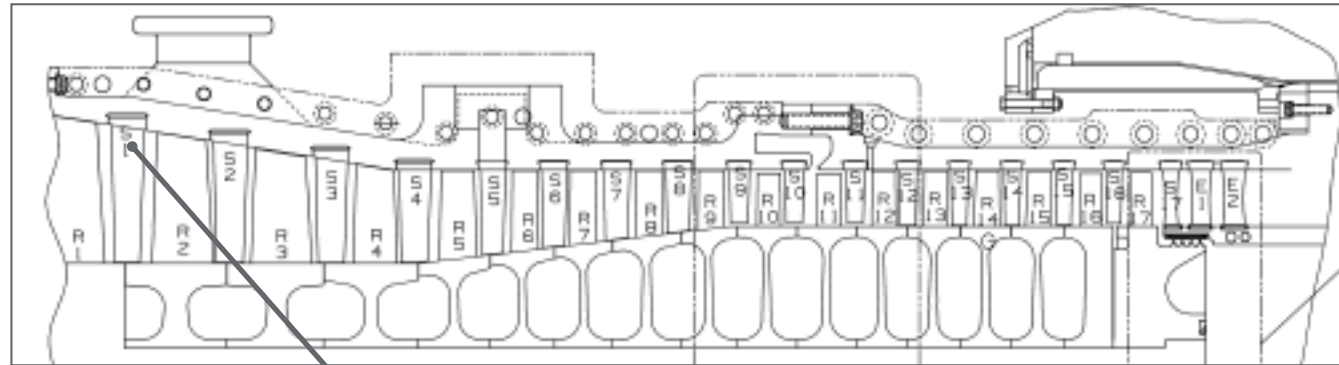
1. GT Turbine Rotor
2. GT Starting Motor/Engine/Transmission
3. GT Cooling Extraction Air Valves
4. GT Gas Fuel Valves



Notes: Source:ORAP ®; All Rights Reserved:SPS ®



# 6B Clashing update



## Clashing and Root cracking

- 6 reported S1 clashing events
  - 5 GTD450\*
  - 1 403Cb
- 1 reported S1 root cracking event
  - GTD450\*

## Solution

	R1/S1 clashing	S1 root liberation	Available
Stainless steel rings	✓	✓	1Q '17 AO



# Recommendations

## Corrosion mitigation

- GEK 116269 – Gas turbine inlet air specification
- GEK 111330 – Recommendations for gas turbine inlet air filter compartments

## Foreign and domestic material damage

- PSIB 20130813 – Recommendation to inspect inlet air system annually to eliminate the risk of FOD

## S1 inspection recommendations

- Inspect for clashing damage, NDT any indications, and inspect for cracking indications on convex side of airfoil.

## SS ring segments

- Once available, implement the stainless ring segment assemblies at next opportunity
- In the interim, replacement in kind will reset the clock on risk

