

6 Frame 6 Users Group

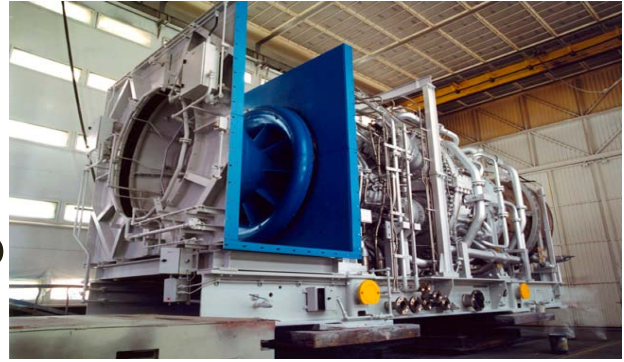


Photo courtesy of General Electric Company

The Frame 6 Users Group 2005 Conference will be held at the South Shore Harbour Resort and Conference Center, 2500 South Shore Blvd., League City, Texas 77573, August 28—31, 2005.

AGENDA HIGHLIGHTS

The Frame 6 Users Group will meet for two and one half days. In addition to frame specific discussions, there will be frame specific presentations by experts on Outage Planning, Repairs, Spare Parts, etc.

ACTIVITIES

The meeting will be kicked off with a Welcome Reception on Sunday, August 28 at the South Shore Harbour Resort and Conference Center. The reception is sponsored by *Advanced Combustion Technology, Inc. (ACT)*, who will also offer a shop tour (with transportation) after the reception. Breakfast will be served every morning (Monday through Wednesday) from 6 AM until 7:00 AM. The meetings will begin at 7:00 AM every morning. Lunch will be served from noon until 1 PM on Monday and Tuesday. The Vendor Fair and reception will be on Monday evening from 5 PM until 9 PM. On Tuesday evening prior to the Group Conference Dinner, *The Allied Power Group's PowerSpares and Turbine Blade Repair Specialists divisions* will host a Users and Guests only cocktail hour. The

<i>Table of Contents</i>	<i>Page</i>
Agenda Highlights Activities	1
Room Block—Hotel Reservations Registration Airport Directions Transportation	2
Sunday's Plant Tour Frame 6 Users Group Conference Dinner Wednesday's Plant Tour Spouse Activities User Survey Form Questions	3
Preliminary Schedule	4
Conference Registration Form	5

wine at the Dinner will be compliments of *The Allied Power Group, PowerSpares and Turbine Blade Specialists divisions*. On Wednesday, lunch will be hosted by *Sulzer Hickham* who will also offer a facility tour (with transportation) afterwards.

ROOM BLOCK—HOTEL RESERVATIONS

The Group has reserved a block of hotel rooms at a special Frame 6 Users Group rate of \$120.00 (plus tax) per night. The hotel will extend the rate for three nights before the conference or three nights after the conference. Reservations are subject to availability and must be made no later than August 1, 2005 to get the group rate. Registering in the group block helps the Group keep meeting costs down. Please call the South Shore Harbour Resort and Conference Center at 1-281-334-1000 to make your reservation. Tell the reservationist that you will be attending the "Frame 6 Users Group Conference."



REGISTRATION

Register by August 1, 2005, by completing the attached form and faxing to the number on the form. The form may also be emailed with a check to arrive by August 1, 2005 to the address on the form. The conference registration fee is \$200.00 if paid by August 1, 2005. After August 1, a late fee of \$50.00 will be charged.

Cancellation: Registration fees are non refundable after August 5th, but may be transferred to another within your company. Registration fees will be refunded if

cancelled prior to August 5th, less a \$50.00 handling fee.

AIRPORT

The closest airport to the South Shore Harbour Resort and Conference Center is Hobby Airport—Houston (Code HOU). Hobby Airport is about 15 minutes from the hotel. Bush International is about an hour away (depending upon traffic).

DIRECTIONS

To drive from either airport: Take I-45 South. Take Exit 23—League City. Make a left going under I-45 on to FM518 ("Main Street"). Travel 4 miles. Turn left onto So. Shore Blvd. Hotel is at end of street. **Parking is free.**

TRANSPORTATION

The hotel contracts with Clear Lake Shuttle Bus to provide limited complimentary group pick-up and delivery to Hobby Airport. In order for the shuttle to be complimentary, you must call (281-334-3873) at least 24 hours in advance to make a reservation. You must be at Curb Zone #12 outside of baggage claim to meet the following schedule on your day of arrival:

- 7:20—7:50 AM
- 9:10—9:30 AM
- 11:30 AM—12:00 PM
- 3:30 PM—4:00 PM or
- 7:30 PM—8 PM

If you can not meet that schedule or did not call in advance, the fare is \$20 per person. Call them (281-334-3873) for pickup and rates from Bush International.

SUNDAY'S PLANT TOUR



ACT will provide transportation to their plant located nearby after the Sunday evening Welcome Reception, which they are sponsoring. ACT specializes in gas turbine component repair, upgrade, manufacture and overall life extension.

ACT's modern plant is set in 13 acres of trees, ponds, and winding roads. They designed their plant from the ground up as a world-class facility and equipped it with the latest in turbine after-market service technology. Just check the appropriate box on the registration form if you would like to participate.

FRAME 6 USERS GROUP CONFERENCE DINNER

Plan to attend the Conference Dinner on Tuesday evening, from 7—9 PM. It will be preceded by a Users and Guests only Cocktail Hour compliments of *The Allied Power Group's PowerSpares and Turbine Blade Repair Specialists divisions*. In addition, the wine at dinner will be compliments of *The Allied Power Group's PowerSpares and Turbine Blade Repair Specialists divisions*. Your spouse is an invited guest to the Cocktail Hour and Dinner.

WEDNESDAY'S PLANT TOUR

Sulzer Hickham will sponsor lunch on Wednesday and a tour of their local Houston Facility. Please indicate on the registration form if you plan to take this tour so that transportation can be pre-arranged.

SPOUSE ACTIVITIES

Spouses are invited guests to all evening functions. There is no charge for your spouse to attend the Welcome Reception, the Vendor Fair or the Group Dinner. Spouses will be given options of possible spouse group activities at on site registration. Spouse day activities are at their own expense and may include: a day trip to Kemah for fun on the waterfront or to the NASA Houston Space Center or a tour of historic homes. In fact there is so much to do, you might want to come to Texas early or stay later!

USER SURVEY FORM

A Users Survey form is available on the web site (www.Frame6UsersGroup.com) The form may be filled out using Microsoft Word™ and emailed to Info@Frame6UsersGroup.com or filled out, printed and faxed to 704-573-9988.

QUESTIONS?

Contact the coordinator, Wickey Elmo, at Info@Frame6UsersGroup.com or at 1-704-753-4748 or visit the new web site: www.Frame6UsersGroup.com



FRAME 6 USERS GROUP CONFERENCE PRELIMINARY SCHEDULE—

All locations will be at South Shore Harbour except for Plant Tours.

SUNDAY, AUGUST 28, 2005

4:00 PM to 5:30 PM—Early Registration—*Conference Center Entrance Registration Desk*

6:00PM to 7:30 PM—Welcome Reception, sponsored by ACT —*Oasis Cabana and Poolside*

7:40 PM—Vans depart for ACT Plant Tour — *Conference Center Entrance*

MONDAY, AUGUST 29, 2005

6:00 AM—7:00 AM—Breakfast and Registration— Location to be determined

7:00 AM—Noon — Frame 6 Users' Group Meeting — *Marina Plaza Ballroom*

Noon—1:00 PM — Buffet Lunch — Location to be determined

1:00 PM — 5:00 PM — Meeting continued—*Marina Plaza Ballroom*

5:00 PM — 9:00 PM — Vendor Fair and Reception — *Crystal Ballroom*

TUESDAY, AUGUST 30, 2005

6:00 AM—7:00 AM—Breakfast and Registration— Location to be determined

6:30 AM—Noon — Frame 6 Users' Group Meeting — *Marina Plaza Ballroom*

Noon—1:00 PM — Buffet Lunch — Location to be determined

1:00 PM — 5:00 PM — Meeting continued—*Marina Plaza Ballroom*

6:00 PM — 7:00 PM—Frame 6 Users Group Cocktail Party—Sponsored by The Allied Power Group's PowerSpares and Turbine Blade Repair Specialists Divisions—Users and Guests only

7:00 PM — 9:00 PM —Frame 6 Users Group Conference Dinner—Location to be determined (wine compliments of The Allied Power Group's PowerSpares and Turbine Blade Repair Specialists Divisions)

WEDNESDAY, AUGUST 31, 2005

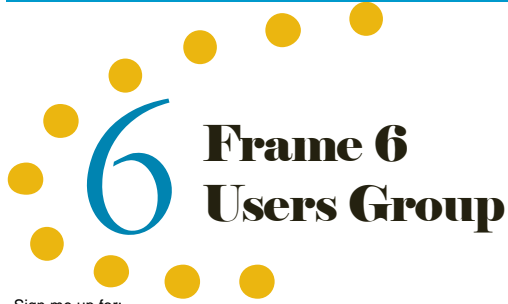
6:00 AM—7:00 AM—Breakfast — Location to be determined

7:00 AM—Noon — Frame 6 Users' Group Meeting — *Marina Plaza Ballroom*

Noon—Lunch—Sponsored by Sulzer Hickham

1:00 PM—Plant Tour Sulzer Hickham

Updates to the Agenda will be available on the website www.Frame6UsersGroup.com starting in July.



2005 Conference Registration Form

Fax completed form
(without additional cover sheet)
by 8/1/05 to:
704-753-9988

Sign me up for:		Price
<input type="checkbox"/> Frame 6 Users Group 2005 Meeting		\$200.00
<input type="checkbox"/> Welcome Reception	Sun. 8/28	NSP
<input type="checkbox"/> ACT Facility Tour	Sun. 8/28	NSP
<input type="checkbox"/> Frame 6 Users Group Dinner	Tues. 8/30	NSP
<input type="checkbox"/> Spouse Attending Dinner	Tues. 8/30	NSP
<input type="checkbox"/> Sulzer Hickham Facility Tour	Wed. 8/31	NSP
<input type="checkbox"/> Registration Late Fee (After 8/5/05)	\$50.00	\$

Name as to appear on badge

Company

Address

Total: _____ City, State, Zip Code

Phone Number

Email address

NSP = Not Separately Priced

- Method of Payment
- Check (Preferred)
 - Visa
 - MasterCard

Shirt Size:
(e.g., L, XL)

Amount to Charge (US\$): _____

*Sorry, due to higher cost,
we do not take American
Express*

Checks should be made payable to:

GCSI

and mailed to

GCSI—Frame 6 Users Group, 6224 Howey
Bottoms Road, Indian Trail, NC 28079

Credit Card #

CVV # (Last 3 digits on back of card) Exp. date _____
Zip code of billing address

Print Name as on Card

Signature

My spouse will accompany me. Spouse's Name: _____

Dietary/Ambulatory Restrictions:

Number of Frame 6 Units you own/operate:

Problems or Issues You would like discussed:
