

Frame 6 Users Group



The Frame 6 Users Group 2014 Conference will be held at the Sanibel Harbour Marriott Resort & Spa, 17260 Harbour Pointe Dr., Ft. Myers, FL 33908, June 23-26, 2014.

ACTIVITIES

Two and one half days of meeting will be kicked off with a Welcome Reception and Dinner. Breakfast will be served to the Users every morning (Tuesday through Thursday) from 7 to 8 AM. The meetings will begin at 8 AM every morning. Lunch will be served to the Users from noon until 1 PM Tuesday through Thursday. The Vendor Fair and Reception will be on Tuesday evening from 5:00 PM until 8:30 PM. Spouses are invited to the Monday night dinner and Tuesday evening Vendor Fair and Reception.

ROOM BLOCK — HOTEL RESERVATIONS

The Frame 6 Users Group has reserved a block of hotel rooms at a special Group rate of \$129.00 (plus tax) per night for a Single or Double and \$169 (plus tax) per night for a Suite. Reserving in the Frame 6 Users Group block eliminates the daily resort fee but not the amenities associated with the fee. The hotel will extend the rate from three nights before the conference to three nights after the conference. Reservations are subject to availability and must be made no later than June 1st to get the group rate. Registering in the Group block helps the Group keep meeting costs down. Please either call the Hotel at 1-800-228-9290 or 1-239-466-4000 to make your reservation and tell the reservationist that you are registering for the Frame 6 Users Group conference or you may reserve a room on line through the link at Frame6UsersGroup.org (scroll to the bottom of the page).

AGENDA HIGHLIGHTS

The Frame 6 Users Group will meet for two and one half days. In addition to frame specific discussions, there will be frame specific presentations by experts. On Wednesday GE will be present to answer user group questions and present material of interest to the Frame 6 community. The popular roundtable sessions will be held with GE on Wednesday afternoon again this year.

REGISTRATION —MEETING

Save \$100.00 off the conference registration fee if you register by May 15, 2014. Prior to May 15th, the fee is **\$450.00**. For registrations on and after May 15th, the registration fee is \$525.00. On site (without prior form submission at least by June 10th) registration is \$600.00.

How to Register

Register by completing the Registration form and faxing it to the number on the form (1-704-753-9988). Please do not use an additional cover sheet. You may also email the completed form to wickey.elmo@frame6usersgroup.org.

The Registration form is a part of the information email and may also be found on line at www.Frame6UsersGroup.org

Two Ways to Pay:

1. **By Check (preferred):** Once the paper registration form has been faxed or emailed, please mail the check to arrive by June 1, 2014, to Goose Creek Systems, Inc., Frame 6 2014 Conference, 6224 Howey Bottoms Road, Indian Trail, NC 28079-7529.
2. **By Credit Card Direct— For Visa and MasterCard:** You may complete the attached Registration Form for direct payment by Credit Card (if using Visa or MasterCard) and fax it (or email it) to the number on the form. You should receive registration acknowledgement within 5 business days.

Cancellation: Registration fees are non refundable after May 15, but may be transferred to another within your company. Registration fees will be refunded if cancelled prior to May 15, less a \$50.00 handling fee.

AIRPORT

The closest airport to the Sanibel Harbour Marriott is Southwest Florida International (RSW). It is 21 miles from the hotel. The next closest is Tampa International, which is 145 miles away. There is no shuttle service to the hotel. Estimated taxi fare (one way) from RSW is \$45.00. Self parking at the hotel is \$12.00 per day.

DIRECTIONS

From Southwest Florida International Airport (RSW) : Follow signs for I-75 and Fort Myers, and turn right onto Treeline Avenue Extension Continue on Treeline Avenue for approximately 2.5 miles and turn left onto Daniels Parkway. Continue on Daniels Parkway, crossing over U.S. 41(Daniels Parkway becomes Cypress Lake Drive once you have crossed over U.S. 41). Turn left onto Summerlin Road. Go south (8 miles) to Sanibel causeway. Turn right JUST BEFORE the Sanibel Toll Booth onto Punta Rassa Road. The driveway for the resort is on the right.

QUESTIONS?

Contact the coordinator, Wickey Elmo, at Wickey.elmo@Frame6UsersGroup.org or at 1-704-753-5377 or visit the web site: www.Frame6UsersGroup.org.

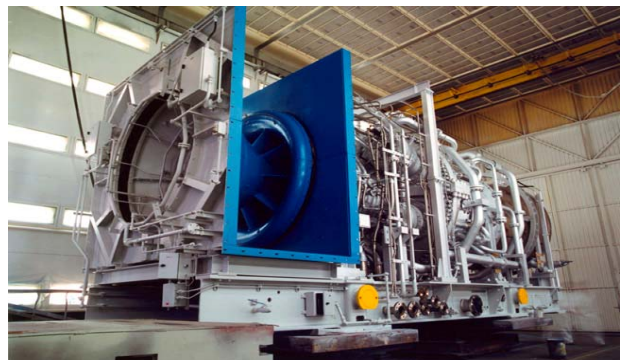


Photo courtesy of General Electric Company

FRAME 6 USERS GROUP CONFERENCE PRELIMINARY SCHEDULE/AGENDA —

FRIDAY, MAY 16, 2014

Early Bird Registration rate expired. Registration now costs \$525.00

MONDAY, JUNE 2, 2014

Last day for Hotel registration at the Group Rate (*subject to availability*)

MONDAY, JUNE 23, 2014

3:00 PM to 6:00 PM—Early Conference Registration—*Registration Desk 1*

6:00PM to 9:00 PM—*Welcome Dinner - Palms Pool Deck*

TUESDAY, JUNE 24, 2014

7:00 AM to 8:00 AM—*Breakfast*—Users only — *Everglades A*

Registration—*Registration Desk 1*

8:00 AM to 4:30 PM — Frame 6 Users' Group Meeting — *Everglades BC*

8:00 AM to 8:15 AM— Opening Remarks—Jeff Gillis, ExxonMobil, and Sam Moots, Colorado Energy, Co-Chairs

8:15 AM to 9:30 AM — VENDOR PRESENTATION #1—

PSM, An Alstom Company—DLN Liner Conversion

9:30 AM to 10:00 AM — *Morning Break*

10:00 AM to 11:00 AM—Roundtable Discussion— Safety

11:00 AM to Noon — Roundtable Discussion—Compressor Section

Noon to 1:00 PM — *Buffet Lunch* — *Everglades A*

1:00 PM to 2:00 PM — VENDOR PRESENTATION #2 — *Praxair—Coatings*

2:00 PM to 3:00 PM — Roundtable Discussion—Combustion Section

3:00 PM to 3:30 PM — *Afternoon Break*

3:30 PM to 4:30 PM — Roundtable Discussion—Turbine Section

4:30 PM — Adjourn for the day

5:00 PM — 8:30 PM — **Vendor Fair and Reception** — *Palm Ballroom*

WEDNESDAY, JUNE 25, 2014

7:00 AM to 8:00 AM—*Breakfast*—*Everglades A*

Registration—*Pre-Function Area Registration Desk*

8:00 AM to 4:30 PM — Frame 6 Users' Group Meeting —*Everglades BC*

8:15 AM to 9:30 AM — *GE PRESENTATIONS*

9:30 AM to 10:00 AM — *Morning Break*

10:00 AM to Noon— *GE PRESENTATIONS* continued

Noon to 1:00 PM — *Buffet Lunch* — *Everglades A*

1:00 PM to 1:10 PM — *GE Roundtable/Table top Introduction and Instructions*—*Everglades BC*

1:10 PM to 1:40— *Table Top Round 1*— *Orchid, Jasmine, & Cypress*

1:50 PM to 2:20 PM— *Table Top Round 2*— *Orchid, Jasmine, & Cypress*

2:30 PM to 3:00 PM—*Table Top Round 3* — *Orchid, Jasmine, & Cypress*

3:00 PM to 3:30 PM — [Afternoon Break](#)

3:30 PM to 4:30 PM — GE Roundtable/Table top Session Wrap-Up and General Questions

4:30 PM — Adjourn for the day

THURSDAY, JUNE 26, 2014

7:00 AM to 8:00 AM—[Breakfast](#) — [Everglades A](#)

8:00 AM to 8:15 AM — Opening Remarks—[Everglades BC](#)

8:15 AM to 9:30 AM — VENDOR PRESENTATION #3 —

9:30 AM to 10:00 AM — [Morning Break](#)

10:00 AM to 10:15 AM — Raffles

10:15 AM to 11:00 AM—Roundtable Discussion—Auxiliaries, Generator & Excitation

11:00 AM to Noon— Roundtable Discussion—Instrumentation & Controls

Noon—12:30 PM — Conference Wrap-up & Closing Remarks — Jeff Gillis, Sam Moots

12:30—1:30 PM — [Lunch](#) — [Everglades A](#)

Go Fishing!

Advanced Turbine Support, LLC, is sponsoring 3 fishing trips. One will be on Thursday afternoon from 2 PM - 7 PM. The other two will be on Friday, June 27th: one at 7 AM — 1 PM, the other at 2 PM — 7 PM. Space is limited so sign up early! Just check the appropriate box on the registration form. First come — first served.



Be a Presenter!

Volunteer to show pictures and discuss any Frame 6 issues you may have encountered. Sharing experiences is what makes these conferences valuable. Discussion materials/pictures should be brought on a flash drive or similar device for transfer to the conference laptop.

Want to be a presenter? Email your topic to Wickey Elmo at wickey.elmo@frame6usersgroup.org