

## 6 Frame 6 Users Group



The Frame 6 Users Group 2013 Conference will be held at the South Shore Harbour Resort and Conference Center, 2500 South Shore Blvd., League City, Texas 77573, June 17-20, 2013

### ACTIVITIES

Two and one half days of meeting will be kicked off with a Welcome Reception and Dinner. Breakfast will be served to the Users every morning (Tuesday through Thursday) from 7 to 8 AM. The meetings will begin at 8 AM every morning. Lunch will be served to the Users from noon until 1 PM Tuesday through Thursday. The Vendor Fair and Reception will be on Tuesday evening from 5:00 PM until 8:30 PM.

### ROOM BLOCK — HOTEL RESERVATIONS

The Frame 6 Users Group has reserved a block of hotel rooms at a special Group rate of \$110.00 (plus tax) per night. The hotel will extend the rate from three nights before the conference to three nights after the conference. Reservations are subject to availability and must be made no later than May 15th to get the group rate. Registering in the Group block helps the Group keep meeting costs down. Please either call the South Shore Harbour Resort and Conference Center at 1-281-334-1000 to make your reservation and tell the reservationist the group code of “Frame62013” or you may reserve a room on line through the link at [Frame6UsersGroup.org](http://Frame6UsersGroup.org).

### AGENDA HIGHLIGHTS

The Frame 6 Users Group will meet for two and one half days. In addition to frame specific discussions, there will be frame specific presentations by experts. On Wednesday GE will be present to answer user group questions and present material of interest to the Frame 6 community. The popular roundtable sessions will be held with GE on Wednesday afternoon again this year. **Thursday afternoon ACT Independent Turbo Services will provide a shop tour for all interested users. Sign up on the Registration Form.**

---

## REGISTRATION —MEETING

---

**Save \$100.00 off the conference registration fee if you register by June 1, 2013.**

Prior to June 1st, the fee is **\$425.00**. For registrations on and after June 1st, the registration fee is \$525.00. On site (without prior form submission) registration is \$600.00.

### How to Register

Register by completing the Registration form and faxing it to the number on the form (1-704-753-9988). Please do not use an additional cover sheet. . You may also email the completed form to [wickey.elmo@frame6usersgroup.org](mailto:wickey.elmo@frame6usersgroup.org).

The Registration form is a part of the information email and may also be found on line at [www.Frame6UsersGroup.org](http://www.Frame6UsersGroup.org)

### Two Ways to Pay:

1. **By Check (preferred):** Once the paper registration form has been faxed or emailed, please mail the check to arrive by June 1, 2013, to Goose Creek Systems, Inc., Frame 6 2013 Conference, 6224 Howey Bottoms Road, Indian Trail, NC 28079-7529.
2. **By Credit Card Direct— For Visa and MasterCard:** You may complete the attached Registration Form for direct payment by Credit Card (if using Visa or MasterCard) and fax it (or email it) to the number on the form. You should receive registration acknowledgement within 5 business days.

**Cancellation:** Registration fees are non refundable after May 15, but may be transferred to another within your company. Registration fees will be refunded if cancelled prior to May 15, less a \$50.00 handling fee.

## AIRPORT

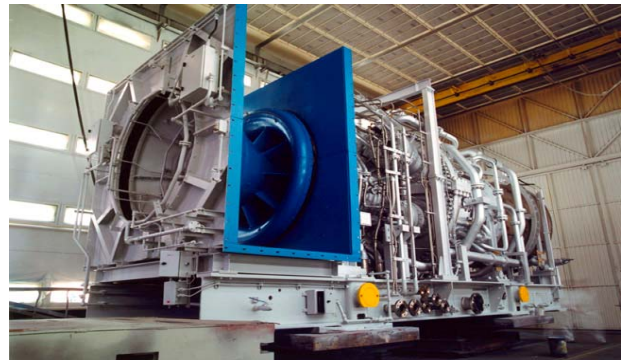
The closest airport to the South Shore Harbour Resort and Conference Center is Hobby Airport—Houston (Code HOU). Hobby Airport is about 15 minutes from the hotel. Bush International is about an hour away (depending upon traffic).

## DIRECTIONS

To drive from either airport: Take I-45 South. Take Exit 23—League City. Make a left going under I-45 on to FM518 (“Main Street”). Travel 4 miles. Turn left onto So. Shore Blvd. Hotel is at end of street. **Parking is free.**

## QUESTIONS?

Contact the coordinator, Wickey Elmo, at [Wickey.elmo@Frame6UsersGroup.org](mailto:Wickey.elmo@Frame6UsersGroup.org) or at 1-704-753-5377 or visit the web site: [www.Frame6UsersGroup.org](http://www.Frame6UsersGroup.org).



*Photo courtesy of General Electric Company*

---

## FRAME 6 USERS GROUP CONFERENCE PRELIMINARY SCHEDULE/AGENDA —

FRIDAY, MAY 17, 2013

---

**Last day for Hotel registration at the Group Rate (*subject to availability*)**

SATURDAY, JUNE 1, 2013

---

**Early Bird Registration rate expired. Registration now costs \$525.00**

MONDAY, JUNE 17, 2013

---

3:00 PM to 6:00 PM—Early Conference Registration—Pre-Function Area Registration Desk

6:00PM to 9:00 PM—[Welcome Dinner](#)

TUESDAY, JUNE 18, 2013

---

7:00 AM to 8:00 AM—[Breakfast](#) (sponsored by Wood Group) - *Harbour Club*

Registration—*Pre-Function Area Registration Desk*

8:00 AM to 4:30 PM — Frame 6 Users' Group Meeting — *Marina Plaza Ballroom*

8::00 AM to 8:15 AM— Opening Remarks—Jeff Gillis, ExxonMobile, and Sam Moots, Colorado Energy, Co-Chairs

8:15 AM to 9:30 AM — VENDOR PRESENTATION #1—Liburdi

9:30 AM to 10:00 AM — [Morning Break](#)

10:00 AM to Noon—Roundtable Discussion—Compressor Section

Noon to 1:00 PM — [Buffet Lunch](#) — Harbour Club (Sponsored by Chromalloy)

1:00 PM to 2:00 PM — VENDOR PRESENTATION #2 —

2:00 PM to 3:00 PM — Roundtable Discussion—Combustion Section

3:00 PM to 3::30 PM — [Afternoon Break](#)

3:30 PM to 4:30 PM — Roundtable Discussion—Turbine Section

4:30 PM — Adjourn for the day

5:00 PM — 8:30 PM — Vendor Fair and Reception — *Crystal Ballroom*

WEDNESDAY, JUNE 19, 2013

---

7:00 AM to 8:00 AM—[Breakfast](#) - *Harbour Club*

Registration—*Pre-Function Area Registration Desk*

8:00 AM to 4:30 PM — Frame 6 Users' Group Meeting

8::00 AM to 8:15 AM— Vendor Fair Raffle Winnerss

8:15 AM to 9:30 AM — GE PRESENTATIONS

9:30 AM to 10:00 AM — [Morning Break](#)

10:00 AM to Noon— GE PRESENTATIONS continued

Noon to 1:00 PM — [Buffet Lunch](#) — *Harbour Club*

1:00 PM to 3:00 PM — GE Roundtable/Table top Discussions

3:00 PM to 3::30 PM — [Afternoon Break](#)

3:30 PM to 4:30 PM — GE Roundtable/Table top Discussions

4:30 PM — Adjourn for the day

---

THURSDAY, JUNE 20, 2013

---

6:00 AM—7:00 AM—[Breakfast](#) — *Harbour Club*

8:00 AM to 8:15 AM — Raffle Winners

8:15 AM to 9:30 AM — VENDOR PRESENTATION #3 —

9:30 AM to 10:00 AM — [Morning Break](#)

10:00 AM to 11:00 AM—Roundtable Discussion—Auxiliaries, Generator & Excitation

11:00 AM to Noon— Roundtable Discussion—Instrumentation & Controls

Noon—12:30 PM — Conference Wrap-up & Closing Remarks — Jeff Gillis, Sam Moots

12:30—1:30 PM — [Lunch](#) — Harbour Club

2:00 PM to 4:00 PM — ACT Independent Turbo Services Shop Tour

## Be a Presenter!

---



Volunteer to show pictures and discuss any Frame 6 issues you may have encountered. Sharing experiences is what makes these conferences valuable. Discussion materials/pictures should be brought on a flash drive or similar device for transfer to the conference laptop.

Want to be a presenter? Email your topic to Wickey Elmo at [wickey.elmo@frame6usersgroup.org](mailto:wickey.elmo@frame6usersgroup.org)

See you in League City!